



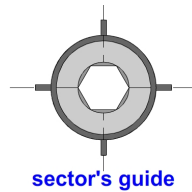
NOTE					
Hstd Hsho AG IG ps pt th (db)	Corsa sbloccaggio standard Corsa sbloccaggio corta Filetto esterno Filetto interno Codolo Presettaggio Mandrino porta utensile Equilibratura dinamica Intercambiabilità e risettaggio	Unblocking stroke standard Unblocking short stroke External thread Internal thread Pull studs Presetting Tool holder Dynamic balancing Interchangeability and resetting	Abspannhub standard Abspannhub kurz ausßen Gewinde innen Gewinde Anzugsbolzen Einstellen Werkzeughalter dynamische Auswuchtung austauschbarkeit und Zurückstellen	Course de déblocage standard Course de déblocage courte Filet extérieur Filet intérieur Tirettes Préréglementation Mandrin porta outils Equilibrage dynamique Interchangeabilité et rajustement	Carrera de desbloqueo normal Carrera de desbloqueo corta Rosca exterior Rosca interior Tirante de tornillo Preestablecimiento Mandrino porta husillo Equilibrio dinámico Intercambio y reajuste

for working **Metals / Wood / Plastic / Non Ferrous Metals**

Niploy Coating micron 6 ± 1

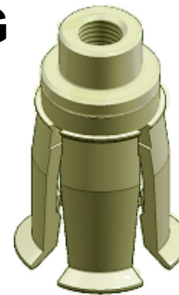


AG



sector's guide

IG



*more space
more force
more range*

STANDARD (st)		DYNAMIC BALANCING (db)		SSK Gr 38	ps	th	pt PRESETTING to		
Hstd	Hsho	Hstd	Hsho				to standard	pp	pp
AG		AG		JBS	JBS1	JBS1	46	JBS	54
-	-		p 6						
AG		AG		TBS ↔TBSM	DIN 69872 A (1-2)	47	DIN 69871/A (1)	54-55	
p 7	p 8	p 11	p 12		ISO 7388/2 A (1-2-3)	48	DIN 2080 (2)	54-55	
IG		IG			ISO 7388/2 B (1-2-3)	49	DIN 69871/A (1)	55	
p 9	p 10	p 13	p 14		ASME B5.50	50	DIN 2080 (2)	55	
AG		AG		SOBIT ↔JMT	ISO 7388/1 (3)	56	ISO 7388/1 (3)	56	
p 25	p 26	p 29	p 30		ANSI	49	DIN 69871/A (1)	55	
IG		IG			ANSI	50	DIN 2080 (2)	54-55	
p 27	p 28	p 31	p 32		ANSI	50	ISO 7388/1 (3)	56	
AG		AG		JMT ↔SOBIT	MAS 403 PT1	51	BT MAS 403	58	
p 33	p 34	p 37	p 38		ANSI	49	7388/1	57	
IG		IG			ANSI	50	ASME B.5.50	57	
p 35	p 36	p 39	p 40	PT1 (BT1)	MAS 403 PT2	51	BT MAS 403	58	
AG		AG		JIS Japan	P	JIS B 6339 P	52	BT JIS 86339 BT MAS 403	58 58
p 41	p 43	IG							
p 42	p 44	IG							

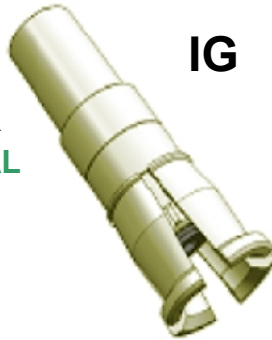
NOTE					
ic oc	Canalizzazione interna Canalizzazione esterna	Inside canalization Outside canalization	innen Canalization Aussen canalization	Canalization interieure Canalization extérieur	Canalization interior Canalization exterior

for working **Stone / Marble / Granite / Glass**
Niploy Coating micron 25 ± 1



AG

CROSS WATER
AXIAL & RADIAL



IG



sector's guide



TBSM

AG

STANDARD (st)	DYNAMIC BALANCING (db)		SSK Gr 38	ps	th						
	H _{std}	H _{sho}				H _{std}	H _{sho}	type	to standard	pp	pt PRESETTING to
AG	p 17	-	AG	p 19	-	AXIAL inside canalization (ic)	DIN	DIN 69872 A (1-2)	47	DIN 69871/A (1)	54-55
p 17	-	p 19	-	ISO 7388/2 A (1-2-3)	48		ANSI	ISO 7388/2 B (1-2-3)	49	DIN 2080 (2)	54-55
IG	p 18	-	IG	p 20	-	RADIAL outside canalization (oc)	DIN	DIN 69872 A (1-2)	47	DIN 69871/A (1)	54-55
p 18	-	p 20	-	ASME B5.50	50		ANSI	ISO 7388/2 B (1-2-3)	49	DIN 2080 (2)	54-55
AG	-	-	AG	-	-	TBSM	DIN	DIN 69872 A (1-2)	47	DIN 69871/A (1)	54-55
-	-	-	-	ASME B.5.50	57		DIN	ISO 7388/2 A (1-2-3)	48	DIN 2080 (2)	54-55
IG	p 21	-	IG	p 22	-		ANSI	ISO 7388/2 B (1-2-3)	49	ISO 7388/1 (3)	56
p 21	-	p 22	-					ASME B5.50	50	ASME B.5.50	57
AG			AG	p 23	p 24			DIN 69872 A (1-2)	47	DIN 69871/A (1)	54-55
								ISO 7388/2 A (1-2-3)	48	DIN 2080 (2)	54-55
										ISO 7388/1 (3)	56

Intercambiabilità - Interchangeability - Austauschbarkeit - Interchangeabilité - Intercambio

