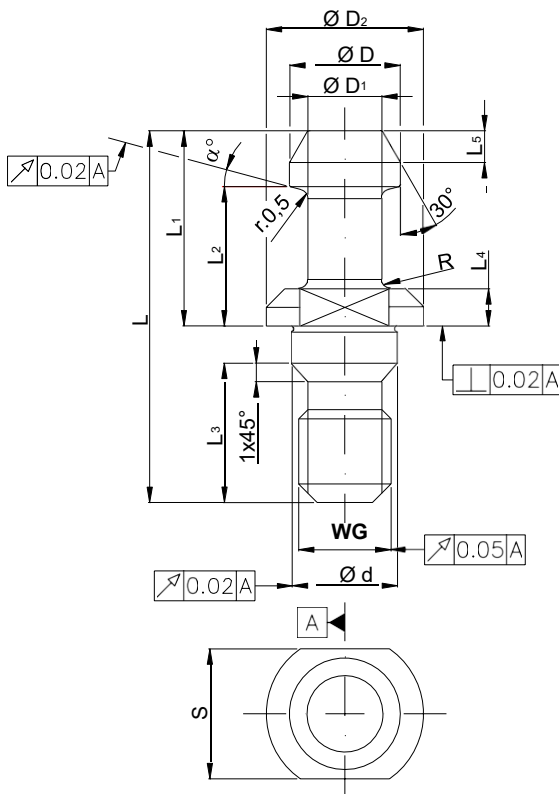




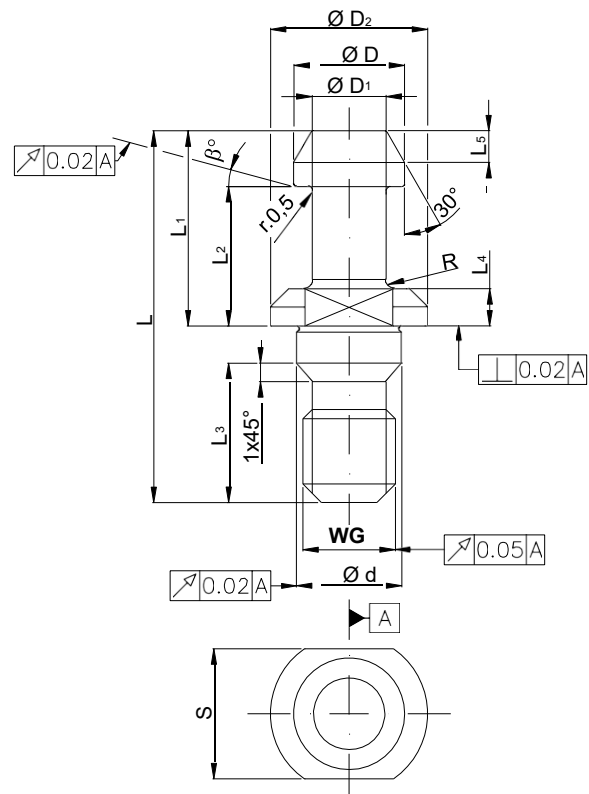
NOTE					
.ps	Codolo	Pull studs	Anzugsbolzen	Tirettes	Tirante de tornillo
.WG	Filetto tenero	Tender thread	weiches Gewinde	Filet tendre	Rosca morbido
HV 670 ±40	Durezza Vickers	Hardness Vickers	Härte Vickers	Dureté Vickers	Dureza Vickers
HRC 58±2	Durezza Rockwell	Hardness Rockwell	Härte Rockwell	Dureté Rockwell	Dureza Rockwell

JBS 1 $\alpha = 15^\circ \pm 15'$

JBS 2 $\beta = 0^\circ \pm 15'$



Form.1



Form.2

ps No	FORM	CODE	ØD	ØD1	ØD2	Ød	WG 6g	L	L 1	L 2	L 3	L 4+	L 5	R +0	S
			+0 -0.1 mm	+0 -0.1 mm	+0 -0.1 mm	f 7 mm			+0 -0.1 mm	+0 -0.1 mm	+0 -0.1 mm	+0 -0.1 mm	-0.1 mm	+0 -0.1 mm	
10 JBS 1	1	42.50.2901	6	4	8.5	5.5	M 5	20	10.5	7.5	7.5	2.0	1.7	1.0	7
10 JBS 2	2	42.51.2902	6	4	8.5	5.5	M 5	20	10.5	7.5	7.5	2.0	1.7	1.0	7
15 JBS 1	1	42.50.2903	7	5	10	7	M 6	23	12	8.5	9	3.0	2.0	1.2	9
15 JBS 2	2	42.51.2904	7	5	10	7	M 6	23	12	8.5	9	3.0	2.0	1.2	9
20 JBS 1	1	42.50.2905	8.5	6	11	7	M 6	25	14	10	9	3.5	2.2	1.2	9
20 JBS 2	2	42.51.2906	8.5	6	11	7	M 6	25	14	10	9	3.5	2.2	1.2	9
25 JBS 1	1	42.50.2907	10	7	12	9	M 8	28	16	11.5	10	3.5	2.5	1.6	10
25 JBS 2	2	42.51.2908	10	7	12	9	M 8	28	16	11.5	10	3.5	2.5	1.6	10