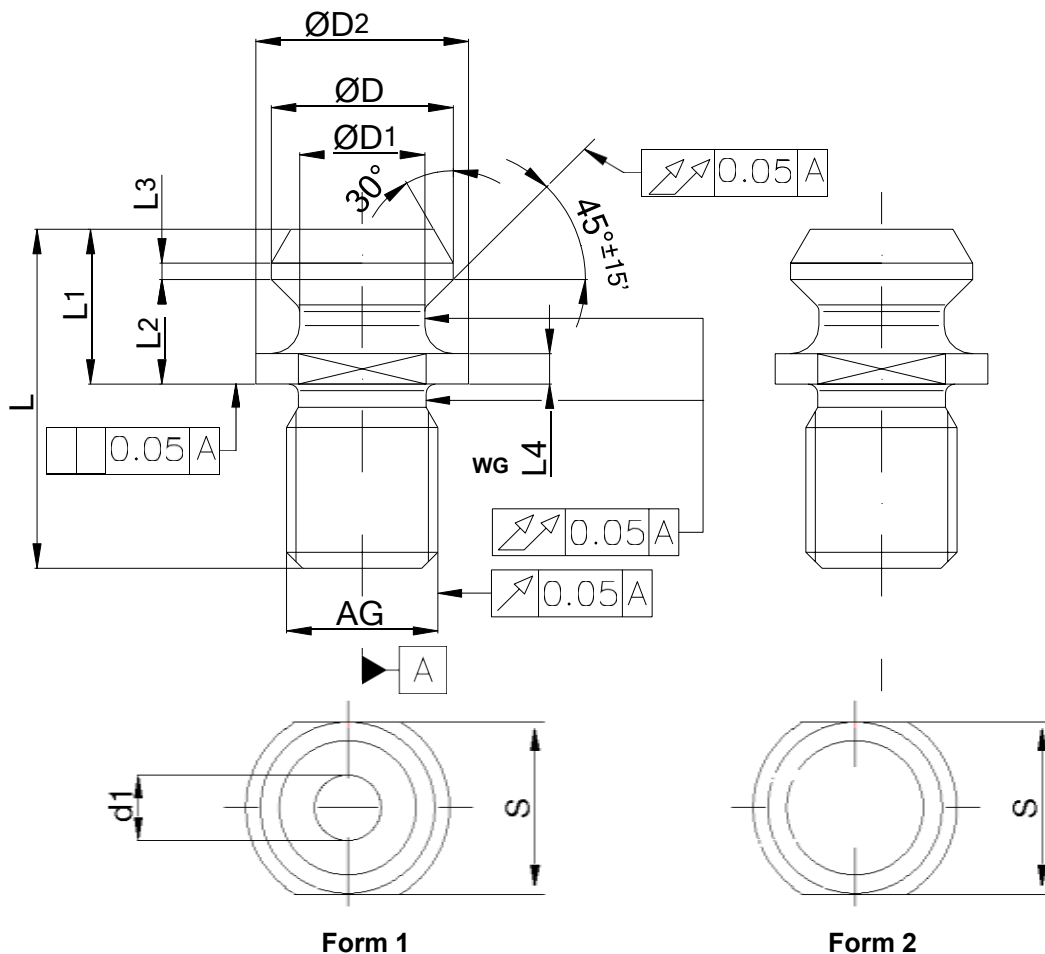


NOTE					
.ps	Codolo	Pull studs	Anzugsbolzen	Tirettes	Tirante de tornillo
.WG	Filetto tenero	Tender thread	weiches Gewinde	Filet tendre	Rosca morbido
HV 670 ±40	Durezza Vickers	Hardness Vickers	Härte Vickers	Dureté Vickers	Dureza Vickers
HRC 58±2	Durezza Rockwell	Hardness Rockwell	Härte Rockwell	Dureté Rockwell	Dureza Rockwell

ASME B5.50



Form 1

Form 2

ps	FORM	CODE	WG	Ø D	Ø D1	L	L1	L2	L3	L4	Ø d1	Ø D2	S	R		
			tols. - METRIC SIZE - mm -													
			6g	±0.127	±0.127	±1.015	±0.127	±0.127	±0.254	±0.254	±0.254	MAX from	MIN to	+0.000 -0.254	+0.254 -0.127	
30	2	49.62.2959	M 12	13.21	9.78	27.94	11.68	8.13	1.01	2.54	--	16.51	16.26	13.46	2.39	
40	1	49.62.2951	M 16	18.80	12.45	38.10	16.25	11.18	1.53	3.05	7.14	23.88	23.40	19.05	2.39	
40	2	49.62.2961	M 16	18.80	12.45	38.10	16.25	11.18	1.53	3.05	--	23.88	23.40	19.05	2.39	
45	1	49.62.2953	M 20	23.88	15.37	45.72	20.83	14.74	2.04	4.07	9.52	30.48	30.00	25.40	2.39	
45	2	49.62.2963	M 20	23.88	15.37	45.72	20.83	14.74	2.04	4.07	--	30.48	30.00	25.40	2.39	
50	1	49.62.2955	M 24	28.96	20.83	58.42	25.40	17.78	2.54	5.08	11.88	36.57	36.10	31.75	3.18	
50	2	49.62.2965	M 24	28.96	20.83	58.42	25.40	17.78	2.54	5.08	--	36.57	36.10	31.75	3.18	
60	1	49.62.2957	M 30	37.08	26.55	81.28	38.10	27.44	3.56	7.62	12.70	54.35	52.32	38.10	3.18	
60	2	49.62.2967	M 30	37.08	26.55	81.28	38.10	27.44	3.56	7.62	--	54.35	52.32	38.10	3.18	